

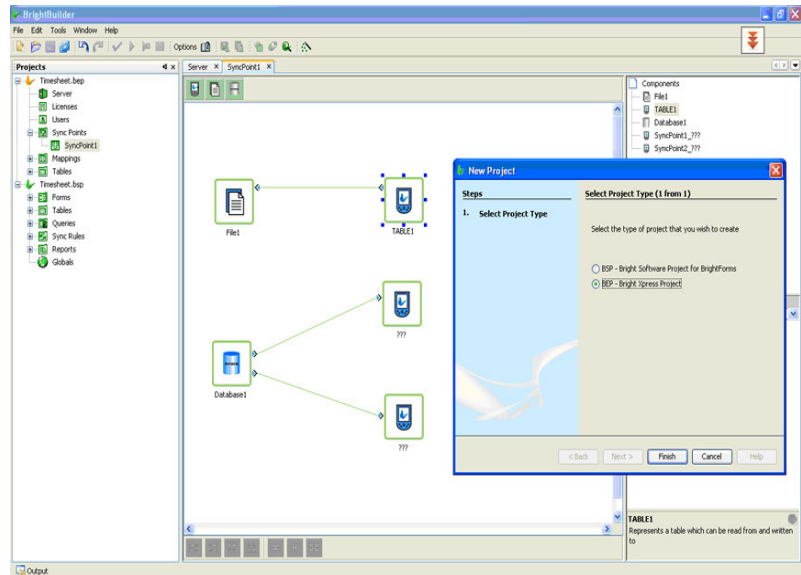


## BrightXpress Product Datasheet

**BrightXpress™** is a flexible mobile data gateway designed to handle business mobility requirements. **BrightXpress™** enables **BrightForms™** powered mobile devices to connect with server-side data sources including powerful relational databases or files based data sources at the backend.

**BrightXpress™** is an easy-to-use mobility enabling platform solution that allows mobile workers to connect to the organisations back-end information systems. It provides simple and efficient ways to transform paper-based systems and manage data flow to and from the field. **BrightXpress™** provides a hassle free environment without the complexity needed to integrate with enterprise infrastructure environments.

**BrightXpress™** exchanges data through the use of embedded **BrightIntegrator™** integration engine, allowing **BrightXpress™** synchronisation engine to detect and send the data changes to field devices.



**BrightXpress™** can reach the data sources, whether they are databases or flat files, via its synchronisation engine, and can detect the changes in the data and send the new changes to **BrightForms™** based remote field clients.

**BrightXpress™** does not require a store-and-forward database. Your mobile solution data sources can be a simple flat CSV file based solution or a Microsoft Access database, or even a large relational database such as Microsoft SQL Server, Oracle or DB2.

## BrightXpress™ Highlights

- BrightXpress comes installed with BrightBuilder 4.0.0 installation, which provides an easy-to-use development environment.
- BrightBuilder acts as the configuration console to BrightXpress and can set up file and database data exchange to and from devices and systems.
- Provides the data synchronisation service for applications running on BrightForms powered devices.
- Provides file based synchronisation with BrightXpress Server
- Provides integration with most popular databases.
- Provides secure, reliable data synchronisation and management systems access.
- Allows for Multiple data source selection and configuration for accessing data from data sources.
- Provides easy to use application distribution and update mechanism.
- BrightXpress has a file based logging facility where the granularity of the log entries can be controlled via a XML configuration file.
- Integrates with BrightBuilder to receive and deploy developed mobile applications.

# BrightXpress Specifications

## Powerful Middleware Platform

<b>Scalability</b>	Can easily scale for large number of users in the field
<b>Authentication</b>	Only allows authenticated users access into the system.
<b>Authorisation</b>	Restricts user access only to their nominated applications and data.
<b>Security</b>	Employs SSL encryption for secure data exchanged between field devices and backend systems

## Open Industry Standards

<b>Latest Technologies</b>	Utilises the latest open industry standards including XML, Web Services, HTTP Internet Protocol and SQL Relational database technologies.
----------------------------	---

## Accessors

<b>File Accessor</b>	Reads and writes data to and from files in CSV or fixed field formats. File formats are defined by mapping configurations.
<b>Database Accessor</b>	Reads and writes data to and from any relational database using JDBC drivers, or from an ODBC database via JDBC-ODBC bridge.

## Synchronisation Service

<b>Guaranteed Data Delivery</b>	BrightXpress™ provides full transaction capabilities over occasionally connected networks with full "commit" and "rollback" functionality.
<b>Data synchronization service for applications running on clients</b>	Based on a fail-safe, multi-table transaction protocol utilising the Simple Object Access Protocol (SOAP) over HTTP. This protocol stack allows easy access through firewalls without putting the network infrastructure security at risk.
<b>Secure data exchange</b>	Data is synchronised between mobile devices and backend systems over a configured, secure SSL channel. BrightXpress™ uses SSL v3 (TLS 1.0) to make secure access to the server possible over insecure networks (Internet, 802.11a/b, Bluetooth, GSM, UMTS, and IMT2000).
<b>Optimised Data Transfer</b>	Only changed data is sent to and from server systems to ensure optimal use of communications networks.
<b>Data Compression</b>	Data sent to and from BrightXpress™ is compressed to minimise the synchronisation times and costs associated with the data transfer.

## Product Requirements

<b>Platforms Supported</b>	<ul style="list-style-type: none"> <li>Windows (NT, 2000, 2003, XP, Vista)</li> <li>Linux</li> <li>Sun Solaris</li> </ul>
<b>Software Requirements</b>	<ul style="list-style-type: none"> <li>BrightXpress™ Version 4.0 bundles JDK 1.6.01 and does not need or rely on any Java version be installed on the machine it will be running.</li> </ul>

## Database Integration

<b>Out-of-the-box native relational database support</b>	Provides native support for MS SQL Server, IBM DB2, Oracle, and MySQL databases. Configuration abilities also available for non-native databases.
--	---

## Data Mapping

<b>Source data can be mapped to destination format using mapping objects</b>	Mappings determine field names, the position, format etc.
--	---

## Multi Platform Support

<b>Designed and implemented using Java technologies.</b>	Runs on all platforms where Java is supported
<b>Windows Service</b>	BrightXpress™ can be installed as a Windows service.

## Application distribution

<b>Mobile Application Distribution and Updates</b>	Provides application distribution & updates to field devices without the need to bring them back to base. A new application release can be redeployed on all required clients at any time with the click of a mouse.
<b>Multiple mobile applications on a single server</b>	BrightXpress™ can host multiple applications for different business units within the enterprise to leverage the existing investment made to the mobility platform.

## Full Logging System

<b>File based logging system</b>	A detailed log information to identify and resolve issues
----------------------------------	---

## XML Based Configuration

<b>Easy configuration using XML</b>	XML configuration tool. Detailed user manual with samples and "how-to" items supplied.
-------------------------------------	--

## BrightBuilder BrightXpress Plug-in

<b>System Configuration</b>	BrightBuilder™ provides a central integrated point for all system administration and configuration functionality. BrightXpress projects can be created and tested without leaving the BrightBuilder environment.
<b>User Configuration</b>	Supports user definitions for deployed applications.
<b>Client Side Tracing Logs</b>	BrightForms™ client logs can be retrieved and inspected via the management console without any field user's intervention.
<b>License Configuration</b>	Tools to configure BrightXpress licenses.

<b>Hardware Requirements</b>	<ul style="list-style-type: none"> <li>Pentium 4 1.8 GHz or better</li> <li>Hard Disk space available: 10 GB</li> <li>Minimum Memory Size: 1 GB (2GB Recommended)</li> </ul>
<b>Databases Supported</b>	<ul style="list-style-type: none"> <li>Microsoft SQL Server</li> <li>Oracle</li> <li>IBM DB2</li> <li>MySQL</li> </ul>

## About BrightSoftware

Proudly 100% Australian owned and a member of The Bright Group of companies, Bright Software began in 2002 with a vision to empower businesses globally to achieve true efficiency within their mobile workforce. Believing that rich software functionality should no longer be confined within the four walls of a business, we've invested more than 50 man years, to date, to develop the 'Bright Mobility Suite', a flexible, industry standards based business mobility platform.

For more information visit: <http://www.brightsoft.com.au>

