

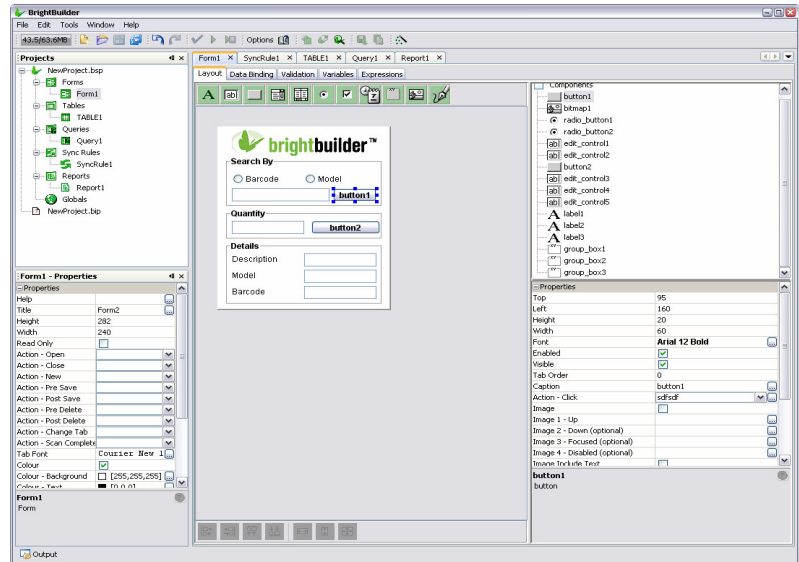
## BrightBuilder Product Datasheet

**BrightBuilder™** reduces the cost, time and risk involved in developing and maintaining tailored mobile enterprise applications. The core of the Bright Mobility Suite, **BrightBuilder™** produces applications rapidly through an innovative interface of modular mobile application development components, removing the burden of writing custom source code.

To be truly effective, mobile enterprise applications should align seamlessly with the policies and processes of the business and its mobile workers. To maintain their effectiveness long-term and the competitive advantage they provide, the flexibility to adapt and evolve rapidly in line with business changes is also needed.

**BrightBuilder™** delivers these benefits and more by providing a re-usable environment for rapidly building or modifying mobile enterprise applications to meet the needs of each department within the business.

Providing drag'n'drop development components for forms design, database tables, queries, synchronisation (data exchange) rules and report



layouts, developers can build and deploy tailored applications in days or weeks and incorporate the unique rules and policies of the business into each mobile application.

Once developed, applications are seamlessly deployed to **BrightXpress™** for wireless distribution to mobile devices when they next connect with **BrightXpress™**. This in-built application deployment framework allows for continuous development and deployment of both new and modified application as required by the business, without disruption to the users.

### BrightBuilder™ Highlights

- Provides user interface, data model, and business rules definition tools.
- Easy-to-use visual form designer
- Single point to design, implement, and test mobile enterprise applications / business mobility solutions.
- Simple mapping of data-bound controls to load data to and from database tables.
- Drag'n'drop expression designer for business rules and calculated fields
- In-built distribution framework wirelessly deploys **BrightForms™** engines, new / modified applications and any other form of data (e.g. PDF documents).
- Text based scripting language for advanced users.
- Integrated support for signature capture, printing, photo capture, serial peripherals (GPS locators, magnetic swipe card readers) & barcode scanners
- Flexible data exchange (synchronisation) rules to & from **BrightXpress™**.
- Built-in database support (no extra coding required).
- Test as you go. Testing is a single click away!
- Multi-aspect layout tool to rapidly modify applications to suit differing form factors (e.g. PDA, Tablet PC, Laptop)

## BrightBuilder Specifications

### Form Designer

<b>Included Controls</b>	Label, Edit, Button, Checkbox, Bitmap, Drop-down / Combo box, Listview / Data Grid control, Radio button, Date-Time picker, Group Box control, Image control, Scribble (signature) control
<b>WSIWYG Form Designer</b>	Rapidly develop application forms using the Drag'n'drop form designer for any form factor (e.g. PDA, CE.NET terminal, tablet PC or laptop). Also provides full colour support for use with form controls.
<b>Event Based Programming</b>	Business / form logic can be incorporated into applications using event hooks / triggers on form controls and objects.
<b>Rule based user input validation</b>	User input validation tool enforces business policies in applications and ensures the quality of the data collected (e.g. specifies mandatory fields, inputs range checks on values entered etc.)
<b>Form and Local Variables</b>	Allows for localised form variables for implementing seamless data flow between forms and within form expressions.
<b>Data binding facility</b>	Provides simple method for creating database driven forms.
<b>Multi Aspect Layout tool</b>	Creates multiple aspect layouts for developed applications without the need to re-develop. Allows a developed application to be rapidly optimised for operation on different form factor devices (e.g. PDA, tablet PC, CE.NET terminal or laptop).
<b>Form Timers</b>	Executes time based expressions (scripts) incorporated within application forms.
<b>Powerful scripting (expression) editor</b>	Drag'n'drop expression (scripting) editor for developing and incorporating complex businesses logic into mobile applications. For advanced users, a text based editor is also provided to for write complex business logic quickly and efficiently.
<b>Built-in Scripting Objects</b>	Included within the expression editor are approximately 30 scripting objects for manipulating data and implementing business logic. These include: String, Number, Array, DateTime, Database, Form, Query, GPS, MagneticCardSwipe, Camera, Zip, Scanner, Security, File, SerialPort, SMS, Email, System, BLOB, Trace, ConnectionManager, Report, DLL etc.
<b>Image redlining using Scribble</b>	Scribble control also allows image redlining for mark-up of pictures or technical drawings.
<b>Data Grid Editing in Listview controls</b>	Enhances Listview control for data entry purposes by allowing direct cell data input in Listview controls using Edit fields, Check boxes, Drop-down list, Date-time picker, or Buttons. Also supports rules based colour coding for each row based on row data content (e.g. urgent jobs can be displayed with red background colour) and rule based configuration of individual rows.

### Database Designer

<b>Database table editor</b>	Allows the application designers to define their application table layout including data types and column constraints.
<b>Query Editor</b>	Generate SQL SELECT statements using a visual interface to represent data subsets from single or multiple database tables.
<b>Stored Procedure Definitions</b>	Develops stored procedures to execute complex data queries on server-side databases via online queries
<b>Documentation Tool</b>	Allows printing of the database schema to a HTML based document

### Synchronisation Rules

<b>Data exchange rules</b>	Flexible synchronisation rules module defines data exchange rules to receive from or send data to BrightXpress™. Allows multiple synchronisation rules to be incorporated into a single application.
----------------------------	--

### IDE

<b>Password protection</b>	Password protects project files
<b>Application Distribution (Project deployment)</b>	Seamlessly deploys project files to BrightXpress™ for distribution to mobile devices.
<b>Auto Form Wizard</b>	Create form templates from imported table definitions inclusive of data queries.
<b>Project Backup</b>	Captures all projects elements into a single backup file.
<b>Multi Project Editing</b>	Allows editing of multiple project files simultaneously.
<b>Validation Tool</b>	Automatically reviews project files before deployment to check for errors. Launches directly to project components for repair.
<b>Global Objects</b>	Create and apply global expressions to applications / projects
<b>Report Designer</b>	Develops complex reports, groups header & footer sections and supports input of calculated fields and column functions.
<b>Project Element Export/Import</b>	All developed project elements can be easily imported & exported between applications to facilitates multi-developer project collaboration or to reduce new application development time.

### Minimum System Requirements

<b>Platforms Supported</b>	<ul style="list-style-type: none"> <li>Windows (NT, 2000, 2003, XP &amp; Vista), Linux &amp; Sun Solaris</li> </ul>
<b>Software Requirements</b>	<ul style="list-style-type: none"> <li>J2SDK Release 1.5.0 or above</li> <li>Windows NT4 Service Pack 6 (or better)</li> <li>Windows 2000 Service Pack 2 (or better)</li> </ul>
<b>Hardware Requirements</b>	<ul style="list-style-type: none"> <li>Pentium 4, 1.8GHz, 125MB Hard Disk, 512MB memory (Recommended: 1GB)</li> </ul>

### About BrightSoftware

Proudly 100% Australian owned and a member of The Bright Group of companies, Bright Software began in 2002 with a vision to empower businesses globally to achieve true efficiency within their mobile workforce. Believing that rich software functionality should no longer be confined within the four walls of a business, we've invested more than 50 man years, to date, to develop the 'Bright Mobility Suite', a flexible, industry standards based business mobility platform.

For more information visit: <http://www.brightsoft.com.au>

