



# brightserver™

## Mobile Data Gateway

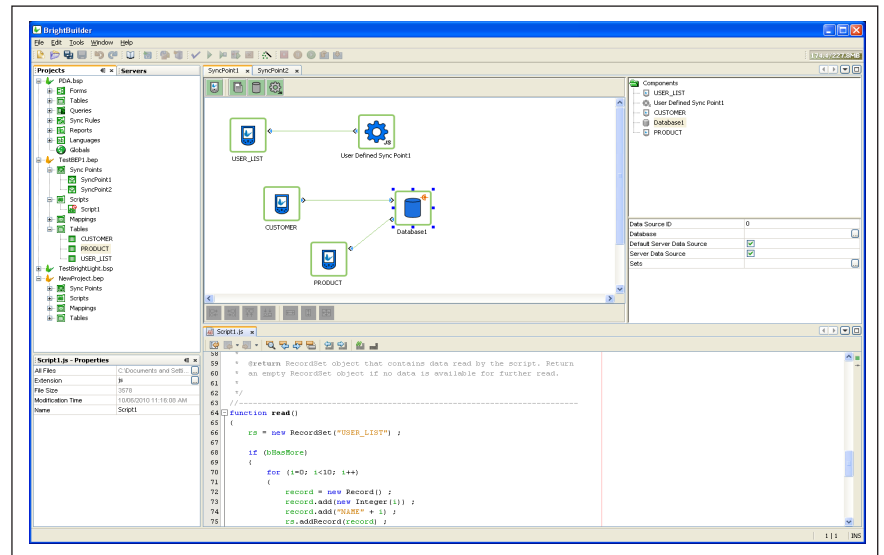
## BrightServer Data Sheet

BrightServer™ is a flexible mobile data gateway designed to handle business mobility requirements. BrightServer™ enables remote mobile devices to connect with server-side data sources including powerful relational databases, user defined JavaScript based sync points, or files based data sources at the backend.

BrightServer™ is an easy-to-use mobility enabling platform that allows mobile workers to connect to the organisations back office information systems. It provides simple and efficient ways to transform paper-based systems and manage data flow to and from the field. It provides a hassle free environment without the complexity needed to integrate with enterprise infrastructure environments.

BrightServer™ exchanges data through the use of embedded integration engine, allowing BrightServer™ synchronisation engine to detect and send the data changes to field devices.

BrightServer™ can reach the data sources, whether they are databases, flat files or user defined sync points via its synchronisation engine, and can detect



the changes in the data and send the new changes to BrightForms™ based remote field clients.

BrightServer™ does not require a store-and-forward database. Your mobile solution data sources can be a simple flat file based solution or a Microsoft Access database, or a large relational database such as Microsoft SQL Server, Oracle or DB2 or even web services via a user defined sync point implemented in JavaScript.

## BrightServer Highlights

- BrightServer comes installed with BrightBuilder installation, which provides an easy-to-use development environment
- BrightBuilder acts as the configuration console to BrightServer and can set up file and database data exchange to and from devices and systems
- Provides the data synchronisation service for applications running on BrightForms powered devices
- Provides integration with most popular databases
- Provides file based synchronisation with BrightServer
- Provides secure, reliable data synchronisation and management systems access
- Powerful server side scripting for implementing server side business logic
- Allows for multiple data source selection and configuration for accessing data from data sources
- Provides easy to use application distribution and update mechanism
- BrightServer has a file based logging facility where the granularity of the log entries can be controlled via a XML configuration file
- Integrates with BrightBuilder to receive and deploy developed mobile applications

© Bright Software. All rights reserved. This document is for informational purposes only.

BRIGHT SOFTWARE MAKES NO WARRANTIES, EXPRESS OR IMPLIED, IN THIS SUMMARY.

Bright Software, BrightServer, BrightBuilder, BrightForms and their logos are either registered trademarks or trademarks of Bright Software in the Australia and/or other countries.

The names of actual companies and products mentioned herein may be the trademarks of their respective owners.

# BrightServer Specifications

## Powerful Middleware Platform

<b>Scalability</b>	Can easily scale for large number of users in the field
<b>Authentication</b>	Only allows authenticated users access into the system
<b>Authorisation</b>	Restricts user access only to their nominated applications and data
<b>Security</b>	Employs SSL encryption for secure data exchanged between field devices and backend systems

## Open Industry Standards

<b>Latest Technologies</b>	Utilises the latest open industry standards including XML, Web Services, HTTP Internet Protocol, SQL Relational database and JavaScript technologies
----------------------------	--

## Accessors

<b>File Accessor</b>	Reads and writes data to and from files in CSV or fixed field formats. File formats are defined by mapping configurations
<b>Database Accessor</b>	Reads and writes data to and from any relational database using JDBC drivers, or from an ODBC database via JDBC-ODBC bridge

## Synchronisation Service

<b>Guaranteed Data Delivery</b>	BrightServer™ provides full transaction capabilities over occasionally connected networks with full “commit” and “rollback” functionality
<b>Data synchronization service for applications running on clients</b>	Based on a fail-safe, multi-table transaction protocol utilising the Simple Object Access Protocol (SOAP) over HTTP. This protocol stack allows easy access through firewalls without putting the network infrastructure security at risk
<b>Secure data exchange</b>	Data is synchronised between mobile devices and backend systems over a configured, secure SSL channel. BrightServer™ uses SSL v3 (TLS 1.0) to make secure access to the server possible over insecure networks (Internet, 802.11a/b, Bluetooth, GSM, UMTS, and IMT2000)
<b>Optimised Data Transfer</b>	Only changed data is sent to and from server systems to ensure optimal use of communications networks
<b>Data Compression</b>	Data sent to and from BrightServer™ is compressed to minimise the synchronisation times and costs associated with the data transfer

## Powerful Middleware Platform

<b>Database Integration</b>	Provides native support for MS SQL Server, IBM DB2, Oracle, and MySQL databases. Configuration abilities also available for non-native databases
-----------------------------	--

## Server Side Scripting

<b>JavaScript Support</b>	Implement server side business logic to integrate into complex backend systems
<b>User defined Sync Points</b>	Create sync data sources and destinations, server side jobs for flexible and powerful data collection, distribution and reporting

## Database Integration

<b>Out-of-the-box relational database support</b>	Provides native support for MS SQL Server, IBM DB2, Oracle, and MySQL databases. Configuration abilities also available for non-native databases
---	--

## Data Mapping

<b>Source data can be mapped to destination format using mapping objects</b>	Mappings determine field names, the position, format etc
--	--

## Multi-Platform Support

<b>Implemented using Java technologies.</b>	Runs on all platforms where Java is supported
<b>Windows Service</b>	BrightServer™ can be installed as a Windows service

## Application Distribution

<b>Mobile Application Distribution and Updates</b>	Provides application distribution & updates to field devices without the need to bring them back to base. A new application release can be redeployed on all required clients at any time with the click of a mouse
<b>Multiple mobile applications on a single server</b>	BrightServer™ can host multiple applications for different business units within the enterprise to leverage the existing investment made to the mobility platform

## Full Logging System

<b>File based logging system</b>	A detailed log information to identify and resolve issues
----------------------------------	---

## Bright Builder Plug-ins

<b>System Configuration</b>	BrightBuilder™ provides a central integrated point for all system administration and configuration functionality. BrightServer projects can be created and tested without leaving the Bright-Builder environment
<b>Client Side Tracing Logs</b>	BrightForms™ client logs can be retrieved and inspected via the management console without any field user's intervention

## Minimum System Requirements

**Platforms Supported** Windows (2003, 2008, XP, Vista, Windows 7) Linux, Sun Solaris

**Software Requirements** BrightServer™ bundles Java run time and does not need or rely on any Java version be installed on the machine it will be running

**Hardware Requirements** Intel Dual Core @3GHz or better, Hard Disk space available: 10 GB Minimum Memory Size: 1 GB (2GB Recommended)

**Databases Supported** Microsoft SQL Server, Oracle, IBM DB2, MySQL