



Mobile Application Designer

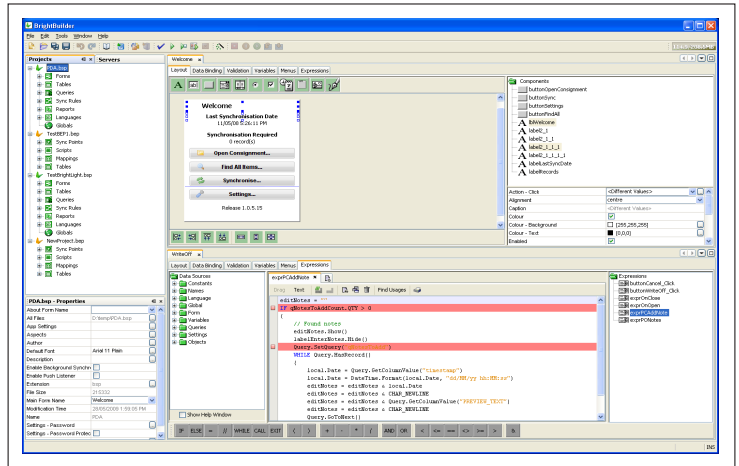
BrightBuilder Data Sheet

BrightBuilder™ reduces the cost, time and risk involved in developing and maintaining tailored mobile enterprise applications. The core of the Bright Mobility Suite, BrightBuilder™ produces applications rapidly through an innovative interface of modular mobile application development components, removing the burden of writing custom source code.

To be truly effective, mobile enterprise applications should align seamlessly with the policies and processes of the business and its mobile workers. To maintain their effectiveness long-term and the competitive advantage they provide, the flexibility to adapt and evolve rapidly in line with business changes is also needed.

BrightBuilder™ delivers these benefits and more by providing a re-usable environment for rapidly building or modifying mobile enterprise applications to meet the needs of each department within the business.

Providing drag'n'drop development components for forms design, database tables, queries, synchronisation (data exchange) rules and



report layouts, developers can build and deploy tailored applications in days or weeks and incorporate the unique rules and policies of the business into each mobile application.

Once developed, applications are seamlessly deployed to BrightServer™ for wireless distribution to mobile devices when they next connect with BrightServer™. This in-built application deployment framework allows for continuous development and deployment of both new and modified application as required by the business, without disruption to the users.

BrightBuilder Highlights

- Provides user interface, data model, and business rules definition tools
- Easy-to-use visual form designer
- Single point to design, implement, and test mobile enterprise applications / business mobility solutions.
- Simple mapping of data-bound controls to load data to and from database tables
- Drag'n'drop expression designer for business rules and calculated fields
- Powerful debugging tools to create robust mobile applications
- Text based scripting language for advanced users
- Integrated support for signature capture, printing, photo capture, serial peripherals (GPS locators, magnetic swipe card readers) and barcode scanners
- Flexible data exchange (synchronisation) rules to and from BrightServer™
- Built-in database support (no extra coding required)
- Test as you go. Testing is a single click away!
- Multi-aspect layout tool to rapidly modify applications to suit differing form factors (e.g. PDA, Tablet PC, Laptop)

BrightBuilder Specifications

Form Designer

Included Controls	Label, Edit, Button, Checkbox, Bitmap, Drop-down / Combo box, Listview / Data Grid control, Radio button, Date-Time picker, Group Box control, Image control, Scribble (signature) control
WSIWYG Form Designer	Rapidly develop application forms using the Drag'n'drop form designer for any form factor (e.g. PDA, CE.NET terminal, tablet PC or laptop). Also provides full colour support for use with form controls
Event Based Programming	Business / form logic can be incorporated into applications using event hooks / triggers on form controls and objects
Rule based user input validation	User input validation tool enforces business policies in applications and ensures the quality of the data collected (e.g. specifies mandatory fields, inputs range checks on values entered etc.)
Form and Local Variables	Allows for localised form variables for implementing seamless data flow between forms and within form expressions
Data binding facility	Provides simple method for creating database driven forms
Multi Aspect Layout tool	Creates multiple aspect layouts for developed applications without the need to re-develop. Allows a developed application to be rapidly optimised for operation on different form factor devices (e.g. PDA, tablet PC, CE.NET terminal or laptop)
Form Timers	Executes time based expressions (scripts) incorporated within application forms
Powerful scripting (exApression) editor	Drag'n'drop expression (scripting) editor for developing and incorporating complex businesses logic into mobile applications. For advanced users, a text based editor is also provided to for write complex business logic quickly and efficiently
Built-in Scripting Objects	Included within the expression editor are approximately 30 scripting objects for manipulating data and implementing business logic. These include: String, Number, Array, DateTime, Database, Form, Query, GPS, MagneticCardSwipe, Camera, Zip, Scanner, Security, File, SerialPort, SMS, Email, System, BLOB, Trace, ConnectionManager, Report, DLL etc
Image redlining using Scribble	Scribble control also allows image redlining for mark-up of pictures or technical drawings
Data Grid Editing in Listview controls	Enhances Listview control for data entry purposes by allowing direct cell data input in Listview controls using Edit fields, Check boxes, Drop-down list, Date-time picker, or Buttons. Also supports rules based colour coding for each row based on row data content (e.g. urgent jobs can be displayed with red background colour) and rule based configuration of individual rows
Debugger	Powerful debugging tools to eliminate bugs and identify and resolves issues

Database Designer

Database table editor	Allows the application designers to define their application table layout including data types and column constraints
Query Editor	Generate SQL SELECT statements using a visual interface to represent data subsets from single or multiple database tables
Stored Procedure Definitions	Develops stored procedures to execute complex data queries on server-side databases via online queries
Documentation Tool	Allows printing of the database schema to a HTML based document

Synchronisation Rules

Data exchange rules	Flexible synchronisation rules module defines data exchange rules to receive from or send data to BrightXpress™. Allows multiple synchronisation rules to be incorporated into a single application
----------------------------	---

IDE

Password protection	Password protects project files
Application Distribution (Project deployment)	Seamlessly deploys project files to BrightXpress™ for distribution to mobile devices
Auto Form Wizard	Create form templates from imported table definitions inclusive of data queries.
Project Backup	Captures all projects elements into a single backup file.
Multi Project Editing	Allows editing of multiple project files simultaneously
Validation Tool	Automatically reviews project files before deployment to check for errors. Launches directly to project components for repair
Global Objects	Create and apply global expressions to applications / projects
Report Designer	Develops complex reports, groups header & footer sections and supports input of calculated fields and column functions
Project Element Export/Import	All developed project elements can be easily imported & exported between applications to facilitates multi-developer project collaboration or to reduce new application development time
JavaScript Editor	Allows creation of powerful user defined sync points, data processing and integration tasks

Minimum System Requirements

Platforms Supported

Windows (NT, 2000, 2003, XP Vista, Windows 7) Linux & Sun Solaris

Hardware Requirements

Intel dual core processor @ 3 GHZ, 1GB Hard Disk space, 1GB memory (Recommended: 2GB)